

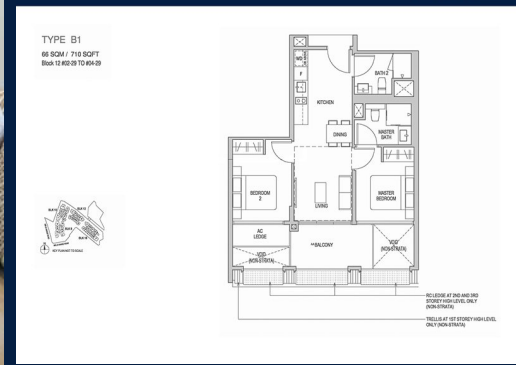
FOR SALE

RESIDENTIAL - CONDOMINIUM 710SQFT (66SQM) / CALL FOR PRICE!

+65 8688 6565



2 - Bedroom



- RESIDENTIAL - CONDOMINIUM**
- 8,10,12,14 RIFLE RANGE ROAD, CLEMENTI PARK, UPPER BUKIT TIMAH, SINGAPORE 588376**
- LISTING ID: SGLD05013578
- TENURE: LEASEHOLD 99
- TITLE: N/A
- SIZE BUILT-UP: 710SQFT (66SQM)
- SIZE LAND: N/A
- NO. OF FLOORS: 5
- FLOOR/LEVEL: N/A - N/A
- BED ROOMS: 2
- BATH ROOMS: 2
- MAIDS ROOMS: N/A
- PARKING SPACES: N/A
- LAYOUT TYPE: INTERMEDIATE
- FACING: N/A
- VIEWING: N/A
- SELLING PRICE: **CALL FOR PRICE!**
- COMPLETION YEAR: 2024
- CONDITION: ORIGINAL CONDITION
- FURNISHING: PARTIALLY FURNISHED
- LISTING DATE: MAY 10, 2021

MAYFAIR GARDENS

Condominium for Sale: Partially furnished. 2 bedroom, 1 bathroom. Completed in 2024, this unit is in original condition. Tenure: Leasehold 99 Located in Singapore's district D21 near Clementi Park, Upper Bukit Timah in the area Central West (Central region).

- #### INTERIOR FACILITIES
- Air-Conditioning
- #### EXTERIOR FACILITIES
- 24 Hours Security
 - Covered Car Park
 - Jacuzzi
 - Landscaped Garden

VISIT THIS PROPERTY AT: <https://www.singaporenewlaunches.com.sg/property/SGLD05013578>



CYNTHIA CHAN - HUTTONS ASIA PTE LTD

3 Bishan Place #05-01 CPF Bishan Building
D20, 579838, Singapore

+65 8688 6565
WhatsApp Me

cynthiachan.huttons@gmail.com

<https://www.singaporenewlaunches.com.sg>



Scan QR Code

Huttons The Agency of Choice
Call for Viewing +65-86886565